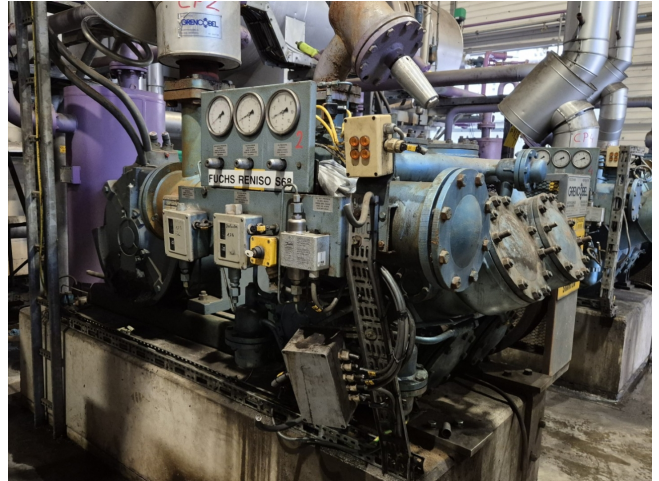


Grasso RC 611

Specifications

Marka	Grasso
Typ	RC 611
Czynnik chłodzący	NH 3 (ammonia)
kW at +10°C/+40°C	990,0*
kW at 0°C/+40°C	662,8*
kW at -5°C/+40°C	532,1*
kW at -10°C/+40°C	418,5*
Rozładunek	✓
Kontrolka wydajności	✓
Podstawa na stalowej ramie	✓
Ciśnieniowe przełączniki bezpieczeństwa	✓
Wskaźniki ciśnienia	✓
Separator oleju	✓
Okno widokowe	✓
m ³ / h	798,0
Stock	1



Description

Used Grasso RC 611

Used Grasso RC 611 reciprocating compressor on NH3 (R717). Complete with a electric motor, oil separator, pressure and safety switches/gauges. The compressor has a displacement of 798 m³/h and the capacity is based on 1000 RPM.

*Why choose for HOSBV? We are not only the largest used refrigeration specialist in Europe, but also, we deliver all equipment including an extensive test, warranty and an industrial cleaning. *Optionally we can also perform a new paint job and arrange the logistics.

